



SPENCER JAMES
RESIDENTIAL

8 Hartlepool Court | London E16 2RL
T: +44 (0) 20 7474 3636
E: mail@spencer-james.co.uk
www.spencer-james.co.uk



**** Four Bedroom Town House ****

**** Available End Of January ****

**** UPVC Double Glazing ****

**** Private Rear Garden Plus Driveway ****

**** Onsite Security & Shops ****



Fishguard Way, London

Monthly Rental Of £2,000

Available to move into at the end of January is this spacious four bedroom town house with three bathrooms and down stairs wc. The property benefits from off street parking, fully double glazed windows, semi garage converted into a study, private rear garden. The property is situated on the popular Galleons lock which benefits from 24 hour security/concierge, onsite shops and is close to transport links.

Entrance Hall

Tiled flooring, door to rooms, wall mounted radiator, double glazed window to side, carpet stairs to 1st floor landing.

WC

Two piece suite comprising of low level wc and wash hand basin with hot and cold tap over, vinyl flooring, wall mounted radiator.

Kitchen/Diner

Range of eye and base level units, tiled flooring, gas hob with extractor over, dishwasher, electric oven, fridge freezer, sink with mixer tap over, tiles splash back, wall mounted radiator, double glazed window to rear open plan to dining area, double glazed door to rear garden.

Store Room

Laminate flooring, wall mounted radiator.

Garage/Study

Carpet flooring, doors to storage cupboard and cupboard housing washing machine.

1st Floor Landing

Carpet flooring, wall mounted radiator, doors to rooms

Lounge

Carpet flooring, wall mounted radiator, two times double glazed window to rear.

Bedroom 3

Carpet flooring, wall mounted radiator, double glazed window to front, built-in wardrobe and desk.

Bedroom 4

Carpet flooring, wall mounted radiator, double glazed window to front.

Bathroom

Three piece suite comprising of low level wc, shower cubicle, wash hand basin with mixer tap over, wall mounted radiator.

Bedroom 1

Carpet flooring, wall mounted radiator, two times double glazed window to front, free standing wardrobe, door to en-suite.

En-Suite

Three piece suite comprising of low level wc, shower cubicle, wash hand basin with mixer tap over, wall mounted radiator.

Bedroom 2

Carpet flooring, wall mounted radiator, two times double glazed window to rear.

Bathroom

Three piece suite comprising of low level wc, bath with mixer tap over with shower attachment over, wash hand basin with mixer tap over, wall mounted radiator.

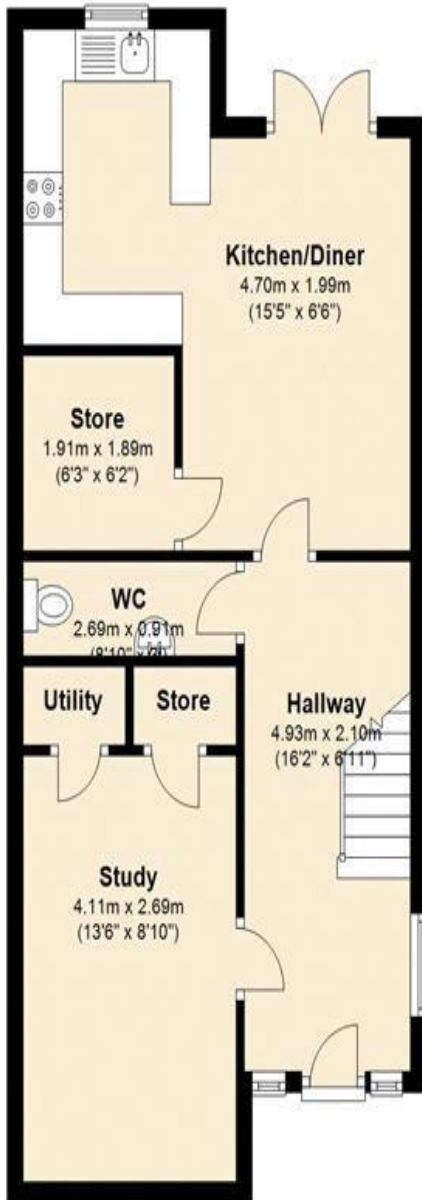
Front And Rear Garden

Fence enclosed rear garden with grass area and paving area, driveway to front with part grassed area, side access to rear garden.

Off street parking

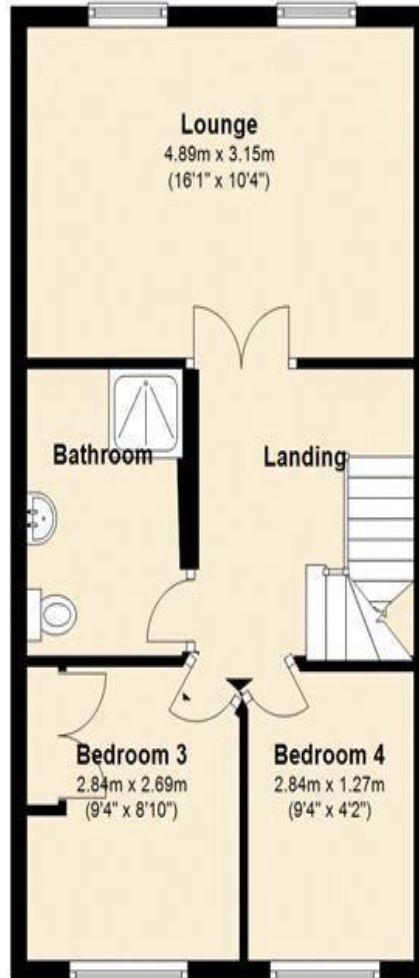
Ground Floor

Approx. 48.6 sq. metres (523.0 sq. feet)



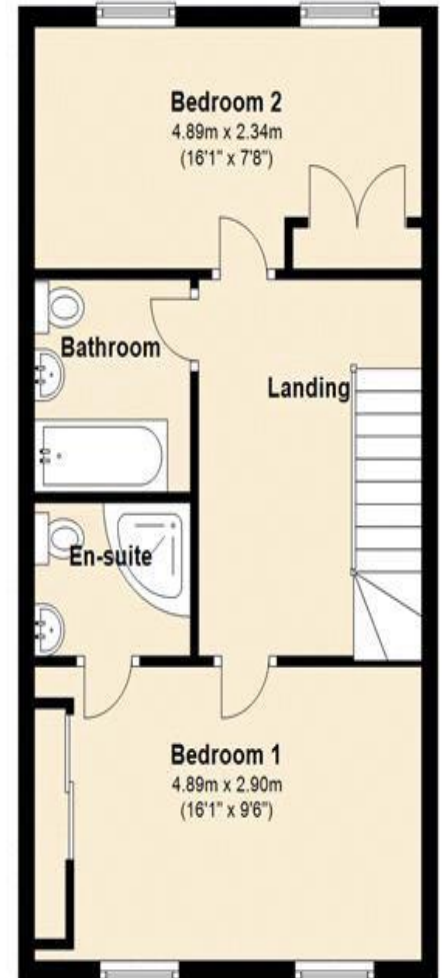
First Floor

Approx. 43.4 sq. metres (466.7 sq. feet)



Second Floor

Approx. 44.3 sq. metres (477.0 sq. feet)



Total area: approx. 136.3 sq. metres (1466.6 sq. feet)

